

# Excel Category 6a

Excel is a complete, end-to-end networking solution, offering exceptional value for money, performance and support, manufactured to International quality standards and covered by a comprehensive no-nonsense single warranty programme.

The Excel Category 6a range of products is the ideal solution for data centres, server farms and storage facilities, as well as providing the ultimate in future-proof copper cabling for the corporate LAN.

Category 6a – as a standard – defines a set of performance criteria for individual and combined cabling components, which must be adhered to by system manufacturers, designers and integrators. Once correctly installed and tested, a Category 6a system provides a copper cabling infrastructure capable of transmitting data at speeds of 10 Gigabit, as well as other applications commonly found in the corporate LAN or data centre including all other Ethernet applications and voice, for example.

The aim in developing the Excel Category 6a copper solution has been to keep it simple. The two key elements of the system are standards compliance and reliability once installed.

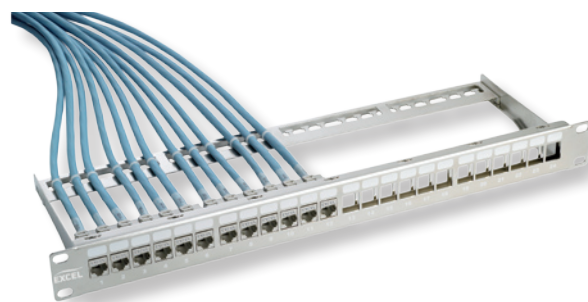
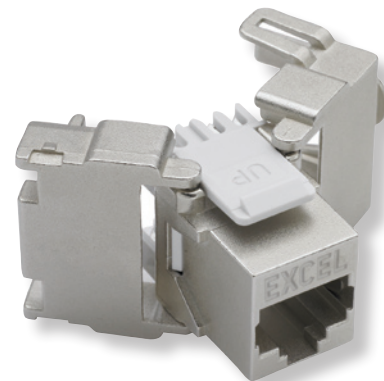
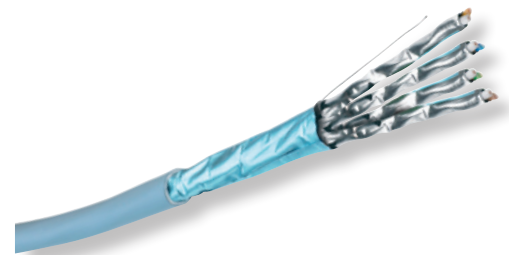
**CAT6<sup>a</sup>**  
**EXCEL**

## The System

At the heart of the Excel 6a solution is a balanced 4-pair cable with dual foil screening. Each cable has a foil tape which provides a 100% screen to each pair, these units are then wrapped in a further foil tape to provide an overall protective screen. An Ice Blue low smoke, zero halogen outer sheath is then applied.

The design ensures a significantly reduced risk of alien cross talk – a measure of noise received on cable adjoining a cable carrying data – as well as protecting against emissions often found when copper cables transmit at high frequencies, such as those found within the Category 6a specification.

The Excel 6a RJ45 keystone jack is common to both the patch panel and the work outlet, ensuring complete consistency of performance. Connector performance has been tuned to the system cable, resulting in typical headroom in excess of the required standards when tested in the field.



## System choice – Cat 6a

	Category 6a
U/UTP	Autumn 08
F/UTP	-
F/FTP	✓
LSOH Cable	✓
Modular Patch Panels	✓
Toolless Outlets	✓
Colour Coded Product	✓
25 Year Warranty	✓
EC Verified	✓

The Excel Category 6a product range has been tested by the Delta EC Cabling Group and complies with the following standards - ISO/IEC 11801:2002 amendment 1 Class Ea, ISO/IEC TR 24750, ANSI/EIA/TIA-568-b.2-10 and ANSI/TIA/EIA TSB-155.



**EXCEL**  
EXCELLENCE IN NETWORKING